

MONTHLY MEMBERSHIP PROGRESS REPORT

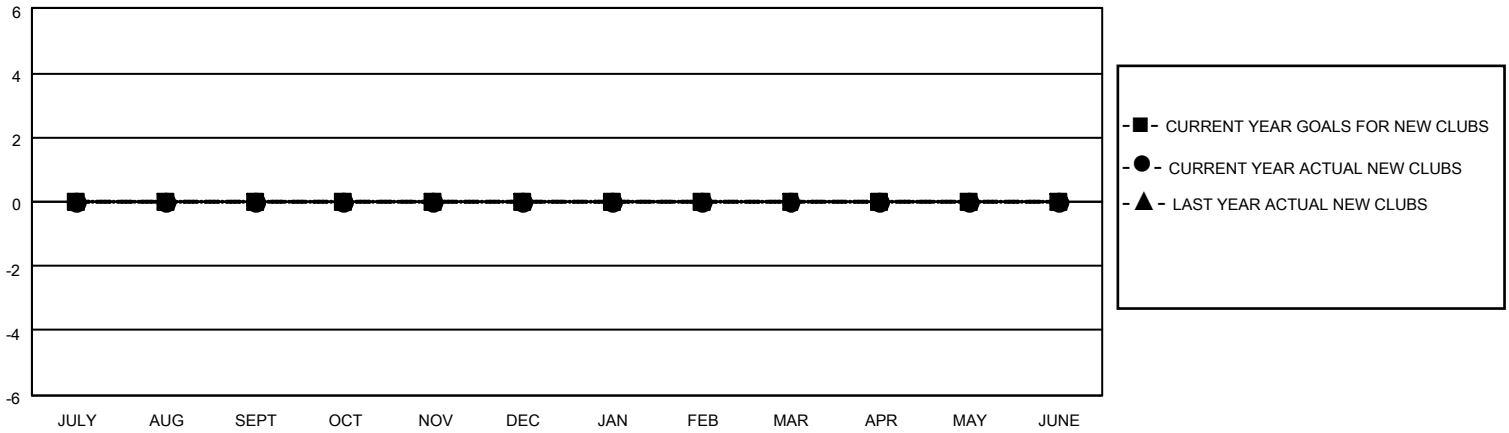
LOCATION NEW ZEALAND

District 202 D

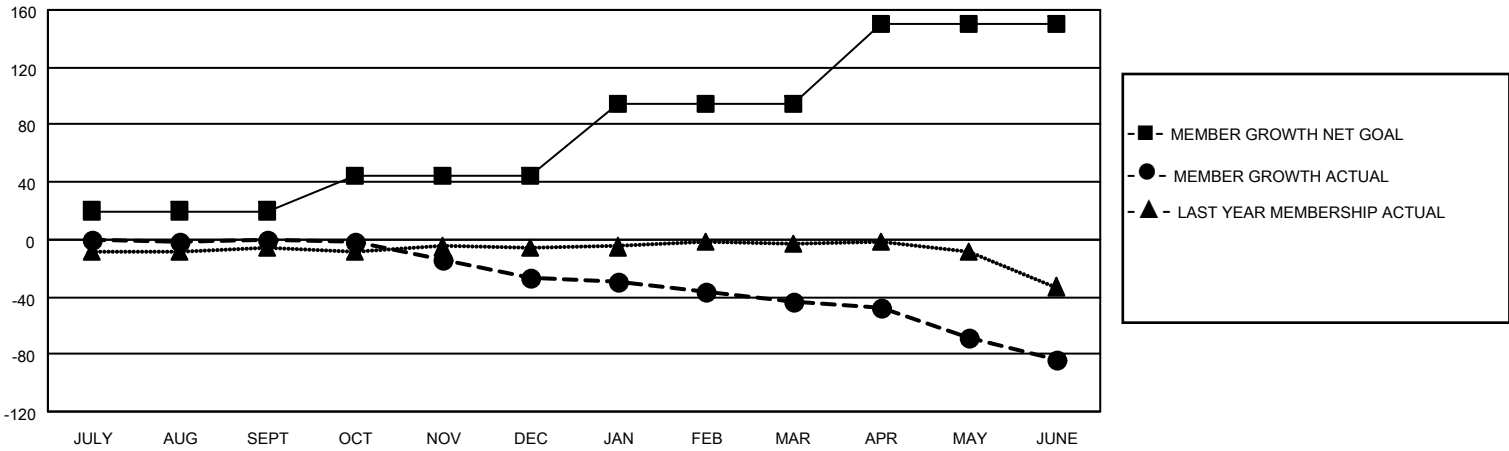
Results as of: 6/30/2022

Clubs				Members			
RESULTS FOR 2021-2022				RESULTS FOR 2021-2022			
QUARTER	NEW CLUB GOAL	NEW CLUBS	DROPPED CLUBS	QUARTER	MEMBER GROWTH NET GOAL	MEMBER GROWTH ACTUAL	DROPPED MEMBERS ACTUAL (including transfers)
JULY/AUG/SEPT	0	0	0	JULY/AUG/SEPT	20	23	20
OCT/NOV/DEC	0	0	1	OCT/NOV/DEC	25	5	32
JAN/FEB/MAR	0	0	0	JAN/FEB/MAR	50	9	23
APR/MAY/JUNE	0	0	1	APR/MAY/JUNE	55	29	64

GOALS AND ACTUAL NEW CLUBS CUMULATIVE



GOALS AND ACTUAL MEMBERS CUMULATIVE



<p>DROPPED CLUBS: 2</p>	<p>19 CLUBS OF 36 ADDED 1 OR MORE NEW MEMBERS</p>	<p style="text-align: center;"><u>GENDER DISTRIBUTION</u></p> <p>MALE 708 (71.73%)</p> <p>FEMALE 279 (28.27%)</p> <p>NON BINARY 0 (0.00%)</p> <p>PREFER NOT TO ANSWER 0 (0.00%)</p>
<p><u>DROPPED MEMBERS</u></p> <p>DECEASED 25</p> <p>CLUB CANCELLED 0</p> <p>OTHER 114</p> <hr/> <p>TOTAL 139</p>	<p style="text-align: center;">CLICK HERE FOR CUMULATIVE MEMBERSHIP DATA</p>	<p>TOTAL FAMILY UNIT MEMBERS 99</p> <p>FAMILY MEMBERS PAYING HALF DUES 50</p>